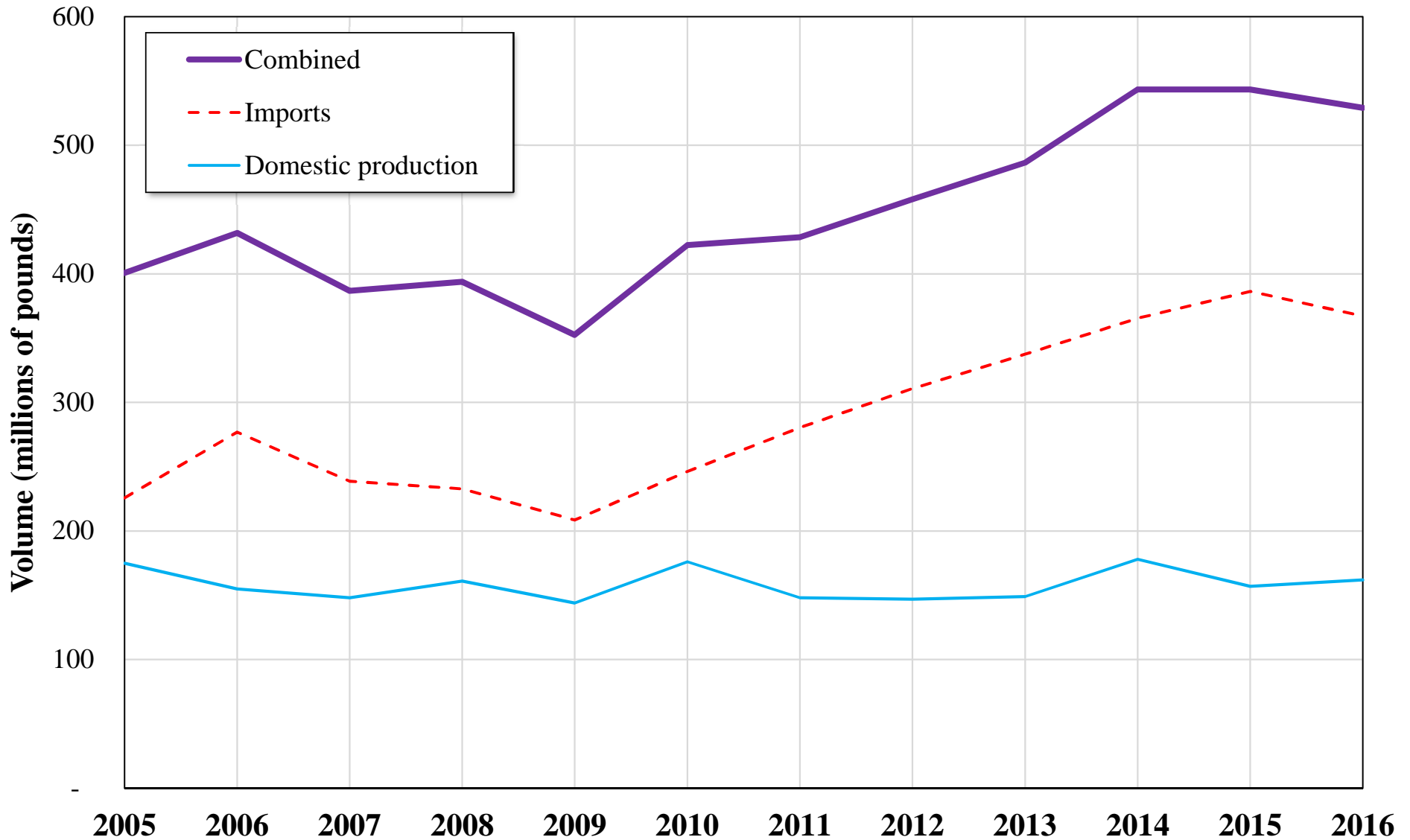


U.S. Honey Production and Imports, 2005 - 2016



U.S. Honey Production and Imports, 2005-2016

<u>Calendar/ Crop Year</u>	<u>Imports</u>	<u>Domestic production</u>	<u>Combined</u>
2005	225,774,230	175,000,000	400,774,230
2006	276,866,859	155,000,000	431,866,859
2007	238,724,473	148,000,000	386,724,473
2008	232,760,312	161,000,000	393,760,312
2009	208,552,017	144,000,000	352,552,017
2010	246,358,482	176,000,000	422,358,482
2011	280,480,879	148,000,000	428,480,879
2012	310,884,491	147,000,000	457,884,491
2013	337,528,678	149,000,000	486,528,678
2014	365,471,818	178,000,000	543,471,818
2015	386,342,803	157,000,000	543,342,803
2016	367,099,434	162,000,000	529,099,434